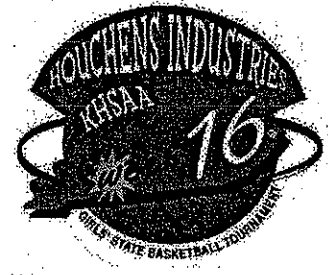


**2005**



**Houchens Industries/KHSAA  
Girls' Sweet 16®  
State Basketball Tournament**

**Final Game Stats  
Session 2 ~ Game 2  
Wednesday, March 23**

**Rowan County Lady Vikings  
vs.  
Montgomery County Indians**



**March 23-26  
Diddle Arena  
Bowling Green**

# 2005 HOUCHENS INDUSTRIES/KHSAA GIRLS' SWEET 16 - Game Box Score

## Rowan County Lady Vikings vs. Montgomery County Lady Indians

Date: 03/23/2005 Time: 8:45 pm CST Site: Diddle Arena-Bowling Green, KY Attendance: 5163

### Visitors: Montgomery County Lady Indians

##	Name	P	FG	3 Pt	FT	PTS	ORB	DRB	TR	PF	AST	TO	BS	ST	MIN
3	K.K. Oaks		1/1	0/0	0/0	2	0	0	0	0	0	0	0	0	0:04
10	Katie Jo Thompson		0/0	0/0	0/0	0	0	0	0	0	1	0	0	0	0:04
11	MacKenzie Lee		0/4	0/1	2/2	2	3	3	6	0	1	5	0	0	17:43
12	* Maggie Prewitt		3/8	1/3	7/10	14	0	5	5	4	0	6	1	2	25:19
14	* Jenna High		2/8	1/7	2/4	7	1	2	3	3	0	2	0	1	31:45
21	* Courtney Danis		6/18	0/0	6/6	18	5	4	9	0	2	3	0	6	35:05
22	* Sherry McGuire		0/2	0/0	3/3	3	2	0	2	3	1	3	0	2	28:24
23	Karie Warner		0/0	0/0	0/0	0	0	0	0	1	0	2	0	0	4:37
24	* Amy Barnard		1/2	0/0	0/0	2	0	1	1	0	0	0	0	0	13:00
30	Hannah Baker		0/0	0/0	0/0	0	0	0	0	0	0	0	0	0	0:04
32	Natasha Thomas		2/5	0/0	3/4	7	1	2	3	3	0	1	0	1	20:13
33	Kayla Webb		0/0	0/0	0/0	0	0	1	1	0	0	0	0	0	3:34
42	Casey Greene		0/0	0/0	0/0	0	0	0	0	0	0	0	0	0	0:04
44	Brooke Coliver		0/0	0/0	0/0	0	0	0	0	0	0	0	0	0	0:04
	Team						3	0	3						
	<b>Totals</b>		<b>15/48</b>	<b>2/11</b>	<b>23/29</b>	<b>55</b>	<b>15</b>	<b>18</b>	<b>33</b>	<b>14</b>	<b>5</b>	<b>22</b>	<b>1</b>	<b>12</b>	<b>180</b>

<b>Total FG</b>	1st Half	5/18	27.8%	2nd Half	10/30	33.3%	Game	15/48	31.3%
<b>3 PT FG</b>	1st Half	1/7	14.3%	2nd Half	1/4	25.0%	Game	2/11	18.2%
<b>Free Throws</b>	1st Half	10/12	83.3%	2nd Half	13/17	76.5%	Game	23/29	79.3%

### Home: Rowan County Lady Vikings

##	Name	P	FG	3 Pt	FT	PTS	ORB	DRB	TR	PF	AST	TO	BS	ST	MIN
3	Casie Waltz		0/0	0/0	0/0	0	0	0	0	0	0	0	0	0	0:04
4	* Lindsay Wientjes		0/0	0/0	0/0	0	0	1	1	3	0	4	0	1	20:47
10	Madison Furman		0/1	0/0	0/0	0	1	1	2	1	0	0	0	1	8:19
11	Stefanie Howard		0/0	0/0	0/0	0	0	0	0	0	0	1	0	0	0:08
15	* Cassidi Spurlock		0/1	0/0	0/0	0	1	1	2	4	0	1	0	1	18:00
20	* Adria Mirus		1/5	0/0	2/4	4	2	4	6	0	0	1	0	0	11:38
22	Caitlyn Martin		0/0	0/0	0/0	0	0	0	0	0	0	0	0	0	0:04
23	Kayla Penix		0/3	0/1	0/0	0	0	1	1	2	1	1	0	0	8:50
24	Molly McCleese		3/4	2/3	0/0	8	0	3	3	0	1	1	0	0	19:53
25	Paige Barhorst		0/0	0/0	0/0	0	0	0	0	0	0	0	0	0	0:04
32	* Melanie Cornett		4/13	0/1	0/3	8	0	2	2	5	5	12	0	4	35:52
45	* Nicole Barr		2/7	0/0	4/4	8	2	4	6	4	1	2	0	1	31:59
55	Suzanne Brown		8/12	0/0	4/4	20	3	4	7	0	0	1	1	1	24:18
44	Megan Sheen		0/0	0/0	0/0	0	0	0	0	0	0	0	0	0	0:04
	Team						3	0	3			1			
	<b>Totals</b>		<b>18/46</b>	<b>2/5</b>	<b>10/15</b>	<b>48</b>	<b>12</b>	<b>21</b>	<b>33</b>	<b>19</b>	<b>8</b>	<b>25</b>	<b>1</b>	<b>9</b>	<b>180</b>

<b>Total FG</b>	1st Half	10/24	41.7%	2nd Half	8/22	36.4%	Game	18/46	39.1%
<b>3 PT FG</b>	1st Half	1/2	50.0%	2nd Half	1/3	33.3%	Game	2/5	40.0%
<b>Free Throws</b>	1st Half	8/9	88.9%	2nd Half	2/6	33.3%	Game	10/15	66.7%

	MONT		ROWAN		MONT		ROWAN	
Free Throw Pts	23	10	3Pt Points	6	6	Pts/Possession	0.83	0.73
Pts off Turnovers	21	24	2nd Chance Points	13	8	Pts off Bench	11	28
Total Rebounds	33	33	Team Rebounds	3	3	Dead Ball Reb	3	3
Off Rebound %	41.7	40.0	Def Rebound %	60.0	58.3	Total Rebound %	50.0	50.0
Technical Fouls	MONT		None					
	ROWAN		K Penix					
Officials	Tonie Brown, Marvin Vaught, Tony Beard							

	Qtr 1	Qtr 2	Qtr 3	Qtr 4	OT 1	OT 2	OT 3	OT 4	Total
Montgomery County Lady Indians	15	6	14	11	9	0	0	0	55
Rowan County Lady Vikings	14	15	8	9	2	0	0	0	48

2005 HOUCHEHS INDUSTIRES/KHSAA GIRLS' SWEET 16 - Play by Play Report - Period: 1 (pg 1)

Rowan County Lady Vikings vs. Montgomery County Lady Indians

Date: 03/23/2005 Time: Site: Diddle Arena-Bowling Green, KY Attendance: N

Name	Action	Action	Score	Clock	Diff	Name	Action	Action
4 L Wientjes	Start Game					12 M Prewitt	Start Game	
15 C Spurlock	Start Game					14 J High	Start Game	
20 A Mirus	Start Game					21 C Danis	Start Game	
32 M Cornett	Start Game					22 S McGuire	Start Game	
45 N Barr	Start Game					24 A Barnard	Start Game	
A Mirus	Jump Ball Win			1 7:58		C Danis	Jump Ball Loss	
A Mirus	FG Attempt			1 7:28		M Prewitt	Def Rebound	
			0-2	1 7:19	-2	C Danis	FG Made	
				1 7:13		M Prewitt	Personal Foul	
M Cornett	Turnover			1 6:57				
				1 6:57		S McGuire	Steal	
				1 6:39		J High	3Pt Attempt	MONT Deadball Reb
N Barr	Personal Foul			1 6:39				
A Mirus	Def Rebound			1 6:15				
M Cornett	Turnover	(Bad Pass)		1 6:00		C Danis	FG Attempt	
				1 6:00		M Prewitt	Steal	
L Wientjes	Personal Foul		0-3	1 5:59	-3	M Prewitt	FT Made	
			0-4	1 5:59	-4	M Prewitt	FT Made	
L Wientjes	Turnover	(Bad Pass)		1 5:55				
				1 5:50		C Danis	FG Attempt	C Danis Off Reb
N Barr	Def Rebound			1 5:47		C Danis	Putback Att	
A Mirus	FG Attempt			1 5:25		C Danis	Def Rebound	
				1 5:15		C Danis	Turnover	(Fumble)
S Brown	Enter Game	for A Mirus		1 5:13				
				1 5:13		M Lee	Enter Game	for J High
S Brown	FG Made	M Cornett Assist	2-4	1 5:08	-2			
				1 4:54		C Danis	Turnover	
M Cornett	FG Attempt	ROWAN Off Reb		1 4:54				
				1 4:54		N Thomas	Enter Game	for A Barnard
S Brown	FG Made	N Barr Assist	4-4	1 4:50	(T1)			
				1 4:31		M Lee	Turnover	(Bad Pass)
C Spurlock	Steal			1 4:31				
				1 4:31		S McGuire	Personal Foul	
				1 4:31		M Lee	Leave Game	
				1 4:31		J High	Enter Game	for M Prewitt
				1 4:31		K Warner	Enter game	
S Brown	FG Made	M Cornett Assist	6-4	1 4:17	+2 (L1)			
				1 3:58		J High	Turnover	(Traveling)
				1 3:58		M Prewitt	Enter Game	for J High
M Cornett	FG Made		8-4	1 3:53	+4			
M Cornett	Personal Foul		8-5	1 3:34	+3	N Thomas	FT Made	
			8-6	1 3:34	+2	N Thomas	FT Made	
M Furman	Enter Game	for N Barr		1 3:34				
M Cornett	3Pt Attempt			1 3:18		N Thomas	Def Rebound	
				1 2:58		M Prewitt	3Pt Attempt	MONT Off Reb
	Official Time Out			1 2:57			Official Time Out	
				1 2:57		M Lee	Enter Game	for S McGuire
				1 2:53		M Lee	Turnover	(Bad Pass)
Wientjes	Steal			1 2:53				
Wientjes	Turnover	(Bad Pass)		1 2:43				
				1 2:43		J High	Enter Game	for M Lee
			8-8	1 2:26	(T2)	C Danis	Layup Made	
M Furman	Personal Foul		8-9	1 2:26	-1 (L2)	C Danis	FT Made	
S Brown	FG Made	M Cornett Assist	10-9	1 2:08	+1 (L3)			
				1 1:55		C Danis	Turnover	
M Furman	Steal			1 1:55				
M Cornett	FG Attempt	C Spurlock Off Reb		1 1:43				
S Brown	FT Made		11-9	1 1:26	+2	N Thomas	Personal Foul	
S Brown	FT Made		12-9	1 1:26	+3			
				1 1:14		K Warner	Turnover	(Traveling)
				1 1:14		S McGuire	Enter Game	for K Warner

2005 HOUCHEM INDUSTRIES/KHSAA GIRLS' SWEET 16 - Play by Play Report - Period: 1 (pg 2)

Rowan County Lady Vikings vs. Montgomery County Lady Indians

Date: 03/23/2005 Time: Site: Diddle Arena-Bowling Green, KY Attendance: N

Name	Action	Action	Score	Clock	Diff	Name	Action	Action
S Brown	FT Made		13-9	1 0:49	+4	N Thomas	Personal Foul	
S Brown	FT Made		14-9	1 0:49	+5			
				1 0:49		K Webb	Enter Game	for N Thomas
			14-11	1 0:32	+3	C Danis	Layup Made	
M Cornett	Turnover	(Traveling)		1 0:29				
C Spurlock	Personal Foul		14-12	1 0:22	+2	J High	FT Made	
M Furman	Def Rebound			1 0:22		J High	FT Attempt	
M Cornett	FG Attempt	S Brown Off Reb		1 0:16				
S Brown	Putback Att			1 0:13		J High	Def Rebound	
C Spurlock	Personal Foul			1 0:03				
				1 0:03		M Prewitt	Leave Game	
				1 0:03		M Lee	Enter Game	for C Danis
				1 0:03		A Barnard	Enter game	
			14-13	1 0:03	+1	S McGuire	FT Made	
			14-14	1 0:03	(T3)	S McGuire	FT Made	
			14-15	1 0:03	-1 (L4)	S McGuire	FT Made	

End of Period Summary Lady Vikings 14 Lady Indians 15

Largest Lead: Lady Vikings 14 Lady Indians 9 (5 pts)

Lead in Period: Lady Vikings 14 Lady Indians 9 (5 pts)

5 for 6 oppo pts

3 for 2 pts

5/12 for 41.7 %

4/4 for 100 %

Turnovers

2nd Chances

Field Goals

Free Throws

Lead Changes: 4 Ties: 3

Lead Changes: 4 Ties: 3 (this period)

7 for 12 oppo pts

2 for 0 pts

3/8 for 37.5 %

9/10 for 90.0 %

2005 HOUCHENS INDUSTRIES/KHSAA GIRLS' SWEET 16 - Play by Play Report - Period: 2 (pg 1)

Rowan County Lady Vikings vs. Montgomery County Lady Indians

Date: 03/23/2005 Time: Site: Diddle Arena-Bowling Green, KY Attendance: N

Name	Action	Action	Score	Clock	Diff	Name	Action	Action
				2 8:00		M Lee	Leave Game	
				2 8:00		M Prewitt	Enter Game	for K Webb
				2 8:00		C Danis	Enter game	
			14-17	2 7:45 -3		M Prewitt	Layup Made	
				2 7:37		J High	Personal Foul	
N Barr	Enter Game	for L Wientjes		2 7:37				
S Brown	Turnover			2 7:29				
				2 7:28		C Danis	Steal	
C Spurlock	Def Rebound			2 6:52		J High	3Pt Attempt	
N Barr	Turnover			2 6:30				
				2 6:29		C Danis	Steal	
M Cornett	Turnover	(Bad Pass)		2 6:26		M Prewitt	Turnover	(Traveling)
				2 6:18				
				2 6:18		M Lee	Enter Game	for J High
S Brown	Def Rebound			2 5:44		M Lee	3Pt Attempt	
M Cornett	FG Attempt	M Furman Off Reb		2 5:37				
M Furman	Putback Att			2 5:34		M Prewitt	Def Rebound	
				2 5:29		M Prewitt	Turnover	
M Cornett	Steal			2 5:29				
M Cornett	Layup Made		16-17	2 5:27 -1				
				2 5:07		S McGuire	FG Attempt	M Lee Off Reb
			16-20	2 5:00 -4		M Prewitt	3Pt Made	C Danis Assist
N Barr	FG Attempt			2 4:41		A Barnard	Def Rebound	
S Brown	Def Rebound			2 4:35		M Lee	FG Attempt	
C Spurlock	Turnover	(Bad Pass)		2 4:19				
				2 4:18		C Danis	Steal	
N Barr	Def Rebound			2 4:11		C Danis	FG Attempt	
				2 4:04		M Prewitt	Personal Foul	
A Mirus	Enter Game	for S Brown		2 4:04				
				2 4:04		M Prewitt	Leave Game	
				2 4:04		C Danis	Leave Game	
				2 4:04		J High	Enter Game	for S McGuire
				2 4:04		K Warner	Enter game	
				2 4:04		N Thomas	Enter game	
N Barr	FT Made		17-20	2 4:04 -3				
N Barr	FT Made		18-20	2 4:04 -2				
				2 3:58		K Warner	Turnover	(Bad Pass)
M Cornett	Steal			2 3:57				
M Cornett	Layup Made		20-20	2 3:54 (T4)				
M McCleese	Enter Game	for M Furman		2 3:47				
A Mirus	Def Rebound			2 3:44		M Lee	FG Attempt	
M Cornett	FG Attempt	ROWAN Deadball Reb		2 3:34				
				2 3:33		K Warner	Personal Foul	
				2 3:33		C Danis	Enter Game	for A Barnard
				2 3:33		S McGuire	Enter Game	for K Warner
A Mirus	FT Made		21-20	2 3:33 +1 (L5)				
A Mirus	FT Made		22-20	2 3:33 +2				
				2 3:22		M Lee	Turnover	
M Cornett	Steal			2 3:22				
M Cornett	Layup Made		24-20	2 3:19 +4				
				2 3:05		S McGuire	Turnover	(Fumble)
M Cornett	Turnover	(Bad Pass)		2 2:57				
				2 2:56		C Danis	Steal	
C Spurlock	Personal Foul			2 2:46				
	Official Time Out			2 2:46			Official Time Out	
				2 2:46		M Prewitt	Enter Game	for M Lee
L Wientjes	Enter Game	for C Spurlock		2 2:46				
			24-21	2 2:46 +3		N Thomas	FT Made	
A Mirus	Def Rebound			2 2:46		N Thomas	FT Attempt	
M McCleese	3Pt Made	M Cornett Assist	27-21	2 2:30 +6				
M McCleese	Def Rebound			2 2:19		M Prewitt	3Pt Attempt	

2005 HOUCHEM INDUSTRIES/KHSAA GIRLS' SWEET 16 - Play by Play Report - Period: 2 (pg 2)

Rowan County Lady Vikings vs. Montgomery County Lady Indians

Date: 03/23/2005 Time: Site: Diddle Arena-Bowling Green, KY Attendance: N

Name	Action	Action	Score	Clock	Diff	Name	Action	Action
				2 1:34		N Thomas	Personal Foul	
M Cornett	FT Attempt			2 1:34		C Danis	Def Rebound	
				2 1:34		S McGuire	Turnover	
N Barr	FG Attempt	N Barr Off Reb		2 1:14				
N Barr	Putback Att	ROWAN Off Reb		2 1:12				
				2 1:09		K Webb	Enter Game	for N Thomas
N Barr	FG Attempt			2 1:04		K Webb	Def Rebound	
				2 0:49		M Prewitt	Offensive Foul	
				2 0:49		M Prewitt	Turnover	
				2 0:49		K Warner	Enter Game	for M Prewitt
A Mirus	FG Made	M McCleese Assist	29-21	2 0:29	+8			
N Barr	Def Rebound			2 0:18		J High	3Pt Attempt	
A Mirus	Turnover	(Fumble)		2 0:01				

End of Period Summary Lady Vikings 29 Lady Indians 21

Largest Lead: Lady Vikings 29 Lady Indians 21 (8 pts)

Lead in Period: Lady Vikings 29 Lady Indians 21 (8 pts)

6 for 1 oppo pts

3 for 0 pts

5/12 for 41.7 %

4/5 for 80.0 %

Turnovers

2nd Chances

Field Goals

Free Throws

Lead Changes: 5 Ties: 4

Lead Changes: 1 Ties: 1 (this period)

7 for 8 oppo pts

1 for 3 pts

2/10 for 20.0 %

1/2 for 50.0 %

**2005 HOUCHENS INDUSTIRES/KHSAA GIRLS' SWEET 16 - Game Box Score**  
**Rowan County Lady Vikings vs. Montgomery County Lady Indians**  
**Date: 03/23/2005 Time: Site: Diddle Arena-Bowling Green, KY Attendance: N**

**Visitors: Montgomery County Lady Indians**

##	Name	P	FG	3 Pt	FT	PTS	ORB	DRB	TR	PF	AST	TO	BS	ST	MIN
3	K.K. Oaks														DNP
10	Katie Jo Thompson														DNP
11	MacKenzie Lee		0/3	0/1	0/0	0	1	0	1	0	0	3	0	0	4:31
12	* Maggie Prewitt		2/4	1/3	2/2	7	0	2	2	3	0	3	0	1	13:17
14	* Jenna High		0/3	0/3	1/2	1	0	1	1	1	0	1	0	0	11:49
21	* Courtney Danis		3/7	0/0	1/1	7	1	2	3	0	1	3	0	4	15:26
22	* Sherry McGuire		0/1	0/0	3/3	3	0	0	0	1	0	2	0	1	13:46
23	Karie Warner		0/0	0/0	0/0	0	0	0	0	1	0	2	0	0	4:37
24	* Amy Barnard		0/0	0/0	0/0	0	0	1	1	0	0	0	0	0	7:36
30	Hannah Baker														DNP
32	Natasha Thomas		0/0	0/0	3/4	3	0	1	1	3	0	0	0	0	7:00
33	Kayla Webb		0/0	0/0	0/0	0	0	1	1	0	0	0	0	0	1:58
42	Casey Greene														DNP
44	Brooke Coliver														DNP
	Team						1	0	1						
	<b>Totals</b>		<b>5/18</b>	<b>1/7</b>	<b>10/12</b>	<b>21</b>	<b>3</b>	<b>8</b>	<b>11</b>	<b>9</b>	<b>1</b>	<b>14</b>	<b>0</b>	<b>6</b>	<b>80</b>

<b>Total FG</b>	1st Half	5/18	27.8%	2nd Half	0/0	0.00%	Game	5/18	27.8%
<b>3 PT FG</b>	1st Half	1/7	14.3%	2nd Half	0/0	0.00%	Game	1/7	14.3%
<b>Free Throws</b>	1st Half	10/12	83.3%	2nd Half	0/0	0.00%	Game	10/12	83.3%

**Home: Rowan County Lady Vikings**

##	Name	P	FG	3 Pt	FT	PTS	ORB	DRB	TR	PF	AST	TO	BS	ST	MIN
3	Casie Waltz														DNP
4	* Lindsay Wientjes		0/0	0/0	0/0	0	0	0	0	1	0	2	0	1	11:09
10	Madison Furman		0/1	0/0	0/0	0	1	1	2	1	0	0	0	1	7:47
11	Stefanie Howard														DNP
15	* Cassidi Spurlock		0/0	0/0	0/0	0	1	1	2	3	0	1	0	1	13:14
20	* Adria Mirus		1/3	0/0	2/2	4	0	3	3	0	0	1	0	0	6:51
22	Caitlyn Martin														DNP
23	Kayla Penix														DNP
24	Molly McCreese		1/1	1/1	0/0	3	0	1	1	0	1	0	0	0	3:47
25	Paige Barhorst														DNP
32	* Melanie Cornett		4/10	0/1	0/1	8	0	0	0	1	4	5	0	3	16:00
45	* Nicole Barr		0/4	0/0	2/2	2	1	3	4	1	1	1	0	0	12:03
55	Suzanne Brown		4/5	0/0	4/4	12	1	2	3	0	0	1	0	0	9:09
44	Megan Sheen														DNP
	Team						2	0	2						
	<b>Totals</b>		<b>10/24</b>	<b>1/2</b>	<b>8/9</b>	<b>29</b>	<b>6</b>	<b>11</b>	<b>17</b>	<b>7</b>	<b>6</b>	<b>11</b>	<b>0</b>	<b>6</b>	<b>80</b>

<b>Total FG</b>	1st Half	10/24	41.7%	2nd Half	0/0	0.00%	Game	10/24	41.7%
<b>3 PT FG</b>	1st Half	1/2	50.0%	2nd Half	0/0	0.00%	Game	1/2	50.0%
<b>Free Throws</b>	1st Half	8/9	88.9%	2nd Half	0/0	0.00%	Game	8/9	88.9%

	MONT		ROWAN		MONT		ROWAN		MONT		ROWAN	
Free Throw Pts	10	8	3Pt Points	3	3	Pts/Possession	0.62	0.88				
Pts off Turnovers	7	20	2nd Chance Points	3	2	Pts off Bench	3	15				
Total Rebounds	11	17	Team Rebounds	1	2	Dead Ball Reb	1	1				
Off Rebound %	21.4	42.9	Def Rebound %	57.1	78.6	Total Rebound %	39.3	60.7				

Technical Fouls **MONT** None  
**ROWAN** None  
 Officials **TONIE BROWN, MARVIN VAUGHT, TONY BEARD**

	Qtr 1	Qtr 2	Qtr 3	Qtr 4	OT 1	OT 2	OT 3	OT 4	Total
<b>Montgomery County Lady Indians</b>	15	6	0	0	0	0	0	0	21
<b>Rowan County Lady Vikings</b>	14	15	0	0	0	0	0	0	29

2005 HOUCHEM INDUSTRIES/KHSAA GIRLS' SWEET 16 - Play by Play Report - Period: 3 (pg 1)

Rowan County Lady Vikings vs. Montgomery County Lady Indians

Date: 03/23/2005 Time: Site: Diddle Arena-Bowling Green, KY Attendance: N

Name	Action	Action	Score	Clock	Diff	Name	Action	Action
				3 8:00		J High	Leave Game	
				3 8:00		C Danis	Leave Game	
				3 8:00		S McGuire	Leave Game	
				3 8:00		K Warner	Leave Game	
				3 8:00		K Webb	Leave Game	
L Wientjes	Leave Game			3 8:00				
A Mirus	Leave Game			3 8:00				
M McCleese	Leave Game			3 8:00				
M Cornett	Leave Game			3 8:00				
N Barr	Leave Game			3 8:00				
				3 8:00		M Prewitt	Enter game	
				3 8:00		J High	Enter game	
				3 8:00		C Danis	Enter game	
				3 8:00		S McGuire	Enter game	
				3 8:00		A Barnard	Enter game	
L Wientjes	Enter game			3 8:00				
K Penix	Enter game			3 8:00				
M Cornett	Enter game			3 8:00				
N Barr	Enter game			3 8:00				
A Mirus	Enter game			3 8:00				
			29-24	3 7:56	+5	J High	3Pt Made	
K Penix	Layup Att	A Mirus Off Reb		3 7:46				
				3 7:46		J High	Personal Foul	
A Mirus	FT Attempt	ROWAN Deadball Reb		3 7:46				
A Mirus	FT Attempt			3 7:46		C Danis	Def Rebound	
L Wientjes	Personal Foul			3 7:29				
				3 7:29		M Prewitt	FT Attempt	MONT Deadball Reb
A Mirus	Def Rebound			3 7:29		M Prewitt	FT Attempt	
N Barr	FG Attempt	ROWAN Off Reb		3 7:10				
M Cornett	Turnover	(Bad Pass)		3 6:55				
				3 6:55		C Danis	Steal	
			29-26	3 6:51	+3	C Danis	Layup Made	
N Barr	FG Made		31-26	3 6:35	+5			
				3 6:15		M Prewitt	Turnover	
M Cornett	Steal			3 6:15				
				3 6:12		N Thomas	Enter Game	for C Danis
ROWAN	Partial Time Out			3 5:55				
				3 5:55		C Danis	Enter Game	for A Barnard
M Cornett	FG Attempt			3 5:45		M Prewitt	Block	M Prewitt Def Reb
			31-28	3 5:39	+3	M Prewitt	Layup Made	
K Penix	Turnover	(Bad Pass)		3 5:27				
				3 5:21		M Prewitt	Turnover	(Fumble)
L Wientjes	Turnover	(Bad Pass)		3 5:18				
				3 5:17		S McGuire	Steal	
				3 5:02		J High	3Pt Attempt	C Danis Off Reb
				3 4:59		C Danis	Putback Att	C Danis Off Reb
			31-30	3 4:42	+1	C Danis	Layup Made	S McGuire Assist
K Penix	Personal Foul			3 4:42				
M McCleese	Enter Game	for K Penix		3 4:42				
S Brown	Enter Game	for A Mirus		3 4:42				
			31-31	3 4:42	(T5)	C Danis	FT Made	
S Brown	FG Attempt			3 4:35		C Danis	Def Rebound	
S Brown	Def Rebound			3 4:21		N Thomas	FG Attempt	
M Cornett	Turnover	(Bad Pass)		3 4:06				
				3 4:06		K Webb	Enter Game	for N Thomas
N Barr	Personal Foul			3 4:02				
L Wientjes	Def Rebound			3 3:57		C Danis	FG Attempt	
M Cornett	Turnover	(Bad Pass)		3 3:42				
				3 3:41		M Prewitt	Steal	
M McCleese	Def Rebound			3 3:36		M Prewitt	Layup Att	
				3 3:26		M Prewitt	Personal Foul	



**2005 HOUCHEMS INDUSTIRES/KHSAA GIRLS' SWEET 16 - Play by Play Report - Period: 3 (pg 2)**  
**Rowan County Lady Vikings vs. Montgomery County Lady Indians**  
**Date: 03/23/2005 Time: Site: Diddle Arena-Bowling Green, KY Attendance: N**

Name	Action	Action	Score	Clock	Diff	Name	Action	Action
S Brown	FG Attempt	S Brown Off Reb		3 3:26		M Lee	Enter Game	for M Prewitt
S Brown	FG Made	M Cornett Assist	33-31	3 3:09	+2			
N Barr	Steal			3 2:52		S McGuire	Turnover	
M Cornett	FG Attempt	N Barr Off Reb		3 2:51				
N Barr	Putback Made		35-31	3 2:44	+4			
L Wientjes	Personal Foul			3 2:35		J High	3Pt Attempt	S McGuire Off Reb
	Official Time Out			3 2:31		S McGuire	Putback Att	C Danis Off Reb
				3 2:30			Official Time Out	
			35-32	3 2:30	+3	N Thomas	Enter Game	for K Webb
M McCleese	FG Made		35-33	3 2:30	+2	C Danis	FT Made	
			37-33	3 2:18	+4	C Danis	FT Made	
N Barr	Def Rebound			3 1:53		N Thomas	FG Attempt	N Thomas Off Reb
N Barr	Turnover	(Traveling)		3 1:49		N Thomas	Putback Att	J High Off Reb
				3 1:27		C Danis	FG Attempt	
				3 1:25				
			37-35	3 0:58		C Danis	FG Attempt	M Lee Off Reb
L Wientjes	Turnover	(Bad Pass)		3 0:31	+2	N Thomas	Layup Made	
M Cornett	Def Rebound			3 0:12				
M Cornett	Turnover	(Traveling)		3 0:09		C Danis	Layup Att	
				3 0:04				
				3 0:04		A Barnard	Enter Game	for N Thomas

**End of Period Summary Lady Vikings 37 Lady Indians 35**

**Largest Lead: Lady Vikings 29 Lady Indians 21 (8 pts)**  
**Lead in Period: Lady Vikings 29 Lady Indians 21 (8 pts)**  
 8 for 10 oppo pts  
 4 for 4 pts  
 4/10 for 40.0 %  
 0/2 for 0.00 %

**Turnovers**  
**2nd Chances**  
**Field Goals**  
**Free Throws**

**Lead Changes: 5 Ties: 5**  
**Lead Changes: 0 Ties: 1 (this period)**  
 3 for 2 oppo pts  
 7 for 7 pts  
 5/17 for 29.4 %  
 3/5 for 60.0 %

2005 HOUCHEHS INDUSTIRES/KHSAA GIRLS' SWEET 16 - Play by Play Report - Period: 4 (pg 1)  
 Rowan County Lady Vikings vs. Montgomery County Lady Indians  
 Date: 03/23/2005 Time: 8:45 pm CST Site: Diddle Arena-Bowling Green, KY Attendance: 5163

Name	Action	Action	Score	Clock	Diff	Name	Action	Action
S Brown	Block	M Cornett Def Reb		4 7:41		A Barnard	FG Attempt	
S Brown	FG Attempt			4 6:58		M Lee	Def Rebound	
			37-37	4 6:39	(T6)	A Barnard	FG Made	M Lee Assist
				4 6:22		S McGuire	Personal Foul	
L Wientjes	Leave Game			4 6:22				
C Spurlock	Enter Game	for S Brown		4 6:22				
A Mirus	Enter game			4 6:22				
N Barr	FT Made		38-37	4 6:22	+1			
N Barr	FT Made		39-37	4 6:22	+2			
N Barr	Personal Foul			4 6:07				
				4 5:59		M Lee	FG Attempt	C Danis Off Reb
			39-39	4 5:57	(T7)	C Danis	Putback Made	
A Mirus	FG Attempt	A Mirus Off Reb		4 5:40				
				4 5:40		S McGuire	Personal Foul	
				4 5:40		N Thomas	Enter Game	for A Barnard
A Mirus	FG Attempt			4 5:18		J High	Def Rebound	
				4 5:06		C Danis	FG Attempt	M Lee Off Reb
M Cornett	Personal Foul			4 4:53				
S Brown	Enter Game	for A Mirus		4 4:53				
M Cornett	Personal Foul			4 4:49				
				4 4:49		J High	FT Attempt	MONT Deadball Reb
			39-40	4 4:49	-1 (L6)	J High	FT Made	
M Cornett	Turnover	(Bad Pass)		4 4:36				
ROWAN	Turnover			4 4:35		J High	Steal	
M Cornett	Personal Foul		39-41	4 4:33	-2	C Danis	FT Made	
			39-42	4 4:33	-3	C Danis	FT Made	
C Spurlock	FG Attempt	S Brown Off Reb		4 4:19				
S Brown	Putback Made		41-42	4 4:17	-1			
				4 4:05		J High	3Pt Attempt	MONT Off Reb
			41-44	4 3:58	-3	J High	FG Made	
M McCleese	3Pt Made		44-44	4 3:39	(T8)			
				4 3:32		MONT	Time Out	
				4 3:32		M Prewitt	Enter Game	for M Lee
				4 3:07		J High	Turnover	(Traveling)
				4 3:00				
M McCleese	Turnover	(Bad Pass)		4 2:52				
				4 2:51		C Danis	Steal	
				4 2:27		C Danis	FG Attempt	MONT Off Reb
	Official Time Out			4 2:24			Official Time Out	
				4 2:21		C Danis	FG Attempt	S McGuire Off Reb
S Brown	Def Rebound			4 2:14		M Prewitt	FG Attempt	
M McCleese	3Pt Attempt			4 1:47		M Prewitt	Def Rebound	
C Spurlock	Personal Foul			4 1:41				
				4 1:41		A Barnard	Enter Game	for N Thomas
K Penix	Enter Game	for C Spurlock		4 1:41				
			44-45	4 1:41	-1	M Prewitt	FT Made	
			44-46	4 1:41	-2	M Prewitt	FT Made	
				4 1:22		J High	Personal Foul	
				4 1:22		M Lee	Enter Game	for S McGuire
M Cornett	FT Attempt	ROWAN Deadball Reb		4 1:22				
M Cornett	FT Attempt			4 1:22		M Lee	Def Rebound	
				4 1:21		M Lee	Turnover	(Traveling)
S Brown	FG Made		46-46	4 1:00	(T9)			
				4 0:46		M Prewitt	Turnover	(Traveling)
ROWAN	Time Out			4 0:46				
				4 0:46		N Thomas	Enter Game	for A Barnard
ROWAN	Time Out			4 0:38				
M Cornett	FG Attempt			4 0:04		M Lee	Def Rebound	

End of Period Summary Lady Vikings 46 Lady Indians 46

Largest Lead: Lady Vikings 29 Lady Indians 21 (8 pts)

Lead Changes: 6 Ties: 9

Name	Action	Action	Score	Clock	Diff	Name	Action	Action
	Lead in Period: Lady Vikings 39- Lady Indians 42 (3 pts)						Lead Changes: 1 Ties: 4 (this period)	
	3 for 2 oppo pts						3 for 2 oppo pts	
	2 for 2 pts						5 for 3 pts	
	3/9 for 33.3 %						3/10 for 30.0 %	
	2/4 for 50.0 %						5/6 for 83.3 %	
							Turnovers	
							2nd Chances	
							Field Goals	
							Free Throws	

2005 HOUCHEHS INDUSTIRES/KHSAA GIRLS' SWEET 16 - Play by Play Report - Period: OT (pg 1)  
 Rowan County Lady Vikings vs. Montgomery County Lady Indians  
 Date: 03/23/2005 Time: 8:45 pm CST Site: Diddle Arena-Bowling Green, KY Attendance: 5163

Name	Action	Action	Score	Clock	Diff	Name	Action	Action
S Brown	Jump Ball Win			5 3:59		C Danis	Jump Ball Loss	
K Penix	FG Attempt			5 3:35		N Thomas	Def Rebound	
K Penix	3Pt Attempt			5 3:33		N Thomas	Turnover	(Bad Pass)
			46-48	5 3:20		M Prewitt	Def Rebound	
S Brown	FG Made	K Penix Assist	48-48	5 3:02	-2	N Thomas	Layup Made	C Danis Assist
K Penix	Def Rebound			5 2:41	(T10)	M Prewitt	FG Attempt	
ROWAN	Time Out			5 1:42				
M Cornett	Turnover	(Double Dribble)		5 0:51				
M Furman	Enter Game	for M McCleese		5 0:51				
				5 0:34		M Lee	Turnover	
S Brown	Steal			5 0:33				
ROWAN	Time Out			5 0:19				
M McCleese	Enter Game	for M Furman		5 0:19				
M Cornett	Turnover			5 0:12				
				5 0:11		N Thomas	Steal	
N Barr	Personal Foul			5 0:09				
K Penix	Technical Foul			5 0:09				
K Penix	Personal Foul		48-49	5 0:09	-1	M Lee	FT Made	
			48-50	5 0:09	-2	M Lee	FT Made	
C Spurlock	Enter Game	for K Penix		5 0:09				
			48-51	5 0:09	-3	M Prewitt	FT Made	
			48-52	5 0:09	-4	M Prewitt	FT Made	
				5 0:09		MONT	Time Out	
M Cornett	Personal Foul			5 0:08				
S Howard	Enter Game	for M Cornett		5 0:08				
			48-53	5 0:08	-5	M Prewitt	FT Made	
M McCleese	Def Rebound			5 0:08		M Prewitt	FT Attempt	
S Howard	Turnover	(Fumble)		5 0:04				
				5 0:04		M Lee	Leave Game	
				5 0:04		M Prewitt	Leave Game	
				5 0:04		J High	Leave Game	
				5 0:04		C Danis	Leave Game	
				5 0:04		K Oaks	Enter Game	for N Thomas
				5 0:04		K J Thompson	Enter game	
				5 0:04		C Greene	Enter game	
				5 0:04		B Coliver	Enter game	
				5 0:04		H Baker	Enter game	
S Howard	Leave Game			5 0:04				
C Spurlock	Leave Game			5 0:04				
M McCleese	Leave Game			5 0:04				
N Barr	Leave Game			5 0:04				
S Howard	Enter Game	for S Brown		5 0:04				
P Barhorst	Enter game			5 0:04				
C Waltz	Enter game			5 0:04				
V Sheen	Enter game			5 0:04				
C Martin	Enter game			5 0:04				
				5 0:04		MONT	Time Out	
			48-55	5 0:01	-7	K Oaks	Layup Made	K J Thompson Assist

End of Period Summary Lady Vikings 48 Lady Indians 55

Largest Lead: Lady Vikings 29 Lady Indians 21 (8 pts)

Lead in Period: Lady Vikings 48 Lady Indians 55 (7 pts)

3 for 2 oppo pts  
 0 for 0 pts  
 1/3 for 33.3 %  
 0/0 for 0.00 %

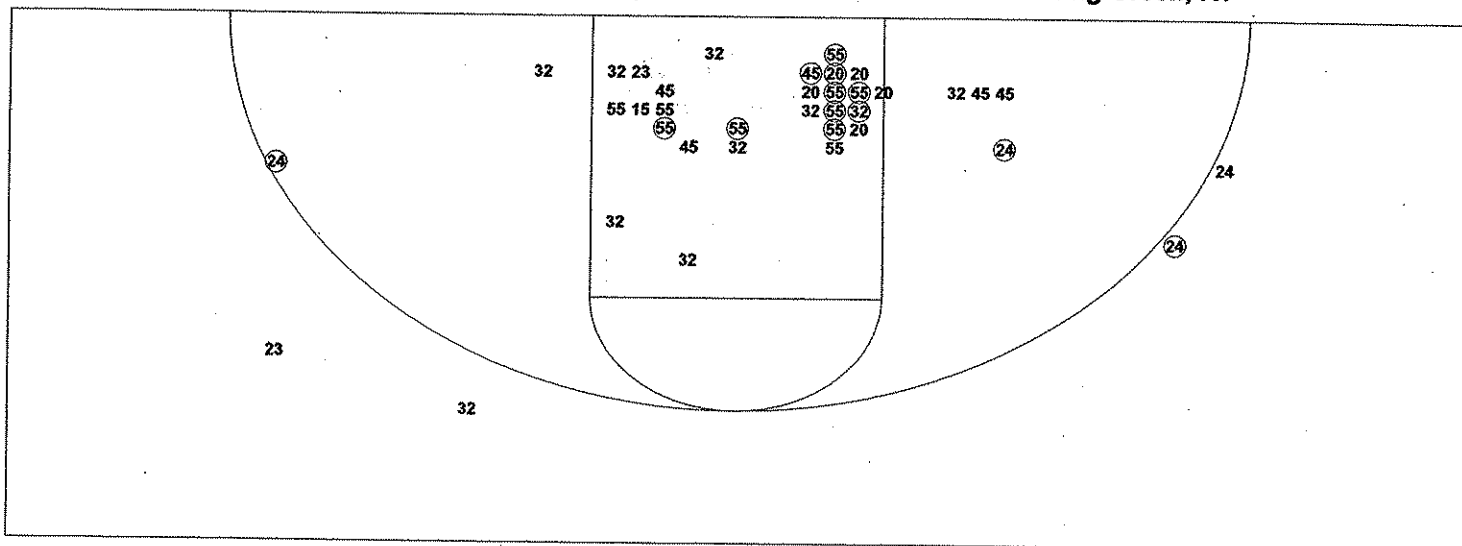
Turnovers  
 2nd Chances  
 Field Goals  
 Free Throws

Lead Changes: 6 Ties: 10  
 Lead Changes: 0 Ties: 1 (this period)  
 2 for 0 oppo pts  
 0 for 0 pts  
 2/3 for 66.7 %  
 5/6 for 83.3 %

2005 HOUCHENS INDUSTRIES/KHSAA GIRLS' SWEET 16 - TEAM SHOT CHART for the Rowan County Lady Vikings

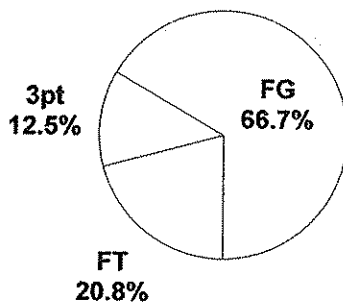
Rowan County Lady Vikings vs. Montgomery County Lady Indians

DATE: 03/23/2005 TIME: 8:45 pm CST SITE: Diddle Arena-Bowling Green, KY

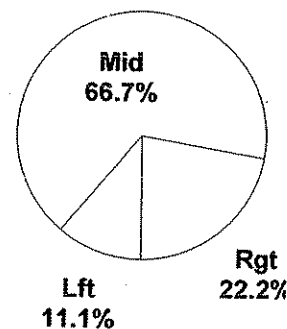


Shot Summary	M/A	%	PTS
3Pt FG	2/5	40.0%	6
2Pt FG	16/41	39.0%	32
Layups - L	1/2	50.0%	2
Layups - R	2/2	100.0%	4
Dunks	0/0	0.0%	0
Putbacks	2/5	40.0%	4
Overall Shooting	18/46	39.1%	38
Free Throws	10/15	66.7%	10
Total Points			48

Scoring Distribution

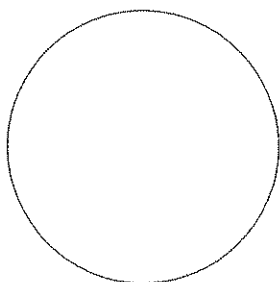


Scoring Locations

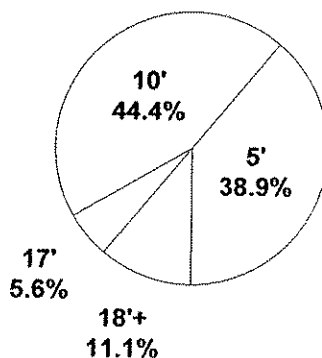


By Period	FG	FGA	FG%	3Pt	3PA	3P%	FT	FTA	FT%	PTS	ORB	DRB	TR	PF	AST	TO	BS	ST	P/S
1st Period	5	12	41.7	0	1	0.00	4	4	100	14	3	3	6	6	4	5	0	3	1.00
2nd Period	5	12	41.7	1	1	100	4	5	80.0	15	3	8	11	1	2	6	0	3	1.07
3rd Period	4	10	40.0	0	0	0.00	0	2	0.00	8	4	6	10	4	1	8	0	2	0.73
4th Period	3	9	33.3	1	2	50.0	2	4	50.0	9	2	2	4	5	0	3	1	0	0.82
OT 1	1	3	33.3	0	1	0.00	0	0	0.00	2	0	2	2	3	1	3	0	1	0.67
Game	18	46	39.1	2	5	40.0	10	15	66.7	48	12	21	33	19	8	25	1	9	0.91

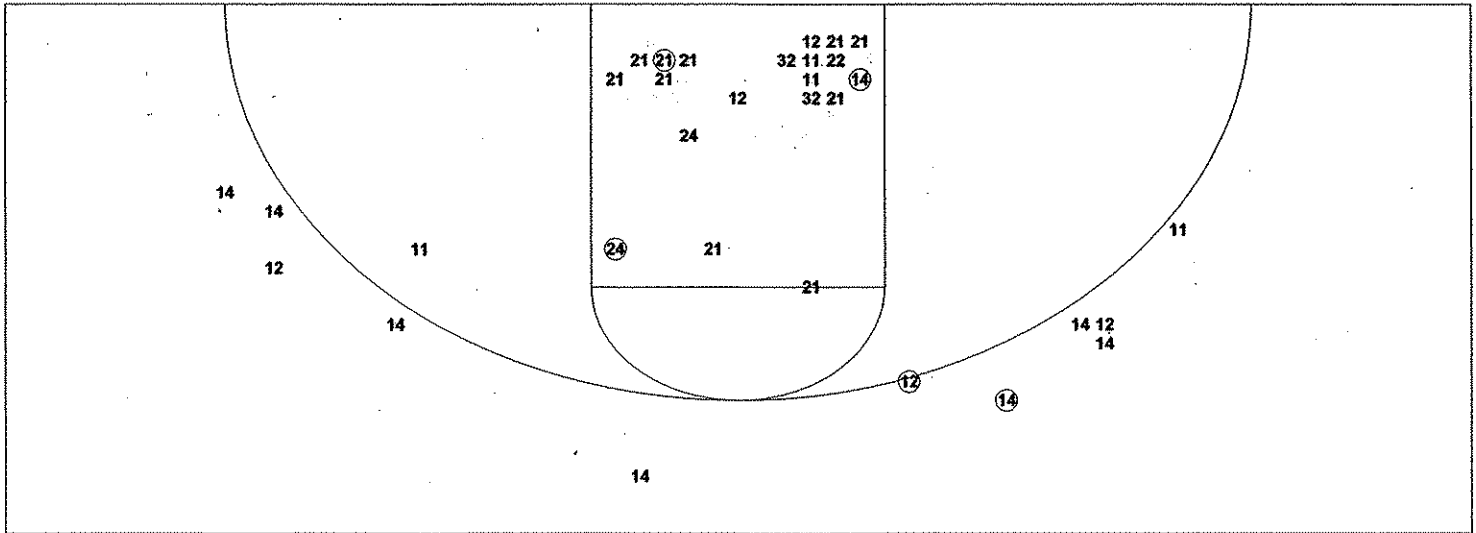
Scoring Breakdown



Scoring Range

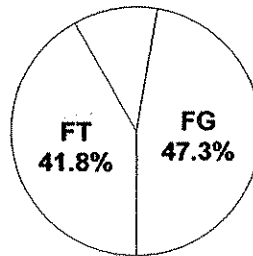


2005 HOUCHEMANS INDUSTRIES/KHSAA GIRLS' SWEET 16 - TEAM SHOT CHART for the Montgomery County Lady Indians  
 Rowan County Lady Vikings vs. Montgomery County Lady Indians  
 DATE: 03/23/2005 TIME: 8:45 pm CST SITE: Diddle Arena-Bowling Green, KY

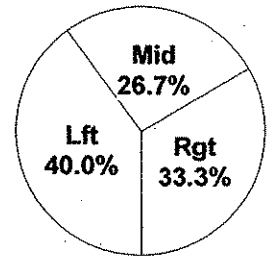


Shot Summary	M/A	%	PTS
3Pt FG	2/11	18.2%	6
2Pt FG	13/37	35.1%	26
Layups - L	6/6	100.0%	12
Layups - R	3/5	60.0%	6
Dunks	0/0	0.0%	0
Putbacks	1/5	20.0%	2
Overall Shooting	15/48	31.3%	32
Free Throws	23/29	79.3%	23
Total Points			55

Scoring Distribution  
3pt  
10.9%

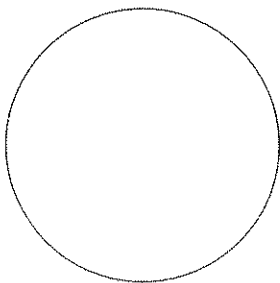


Scoring Locations



By Period	FG	FGA	FG%	3Pt	3PA	3P%	FT	FTA	FT%	PTS	ORB	DRB	TR	PF	AST	TO	BS	ST	P/S
1st Period	3	8	37.5	0	2	0.00	9	10	90.0	15	2	4	6	4	0	7	0	2	1.15
2nd Period	2	10	20.0	1	5	20.0	1	2	50.0	6	1	4	5	5	1	7	0	4	0.55
3rd Period	5	17	29.4	1	3	33.3	3	5	60.0	14	7	3	10	2	1	3	1	3	0.74
4th Period	3	10	30.0	0	1	0.00	5	6	83.3	11	5	5	10	3	1	3	0	2	0.85
OT 1	2	3	66.7	0	0	0.00	5	6	83.3	9	0	2	2	0	2	2	0	1	1.50
Game	15	48	31.3	2	11	18.2	23	29	79.3	55	15	18	33	14	5	22	1	12	0.89

Scoring Breakdown



Scoring Range

